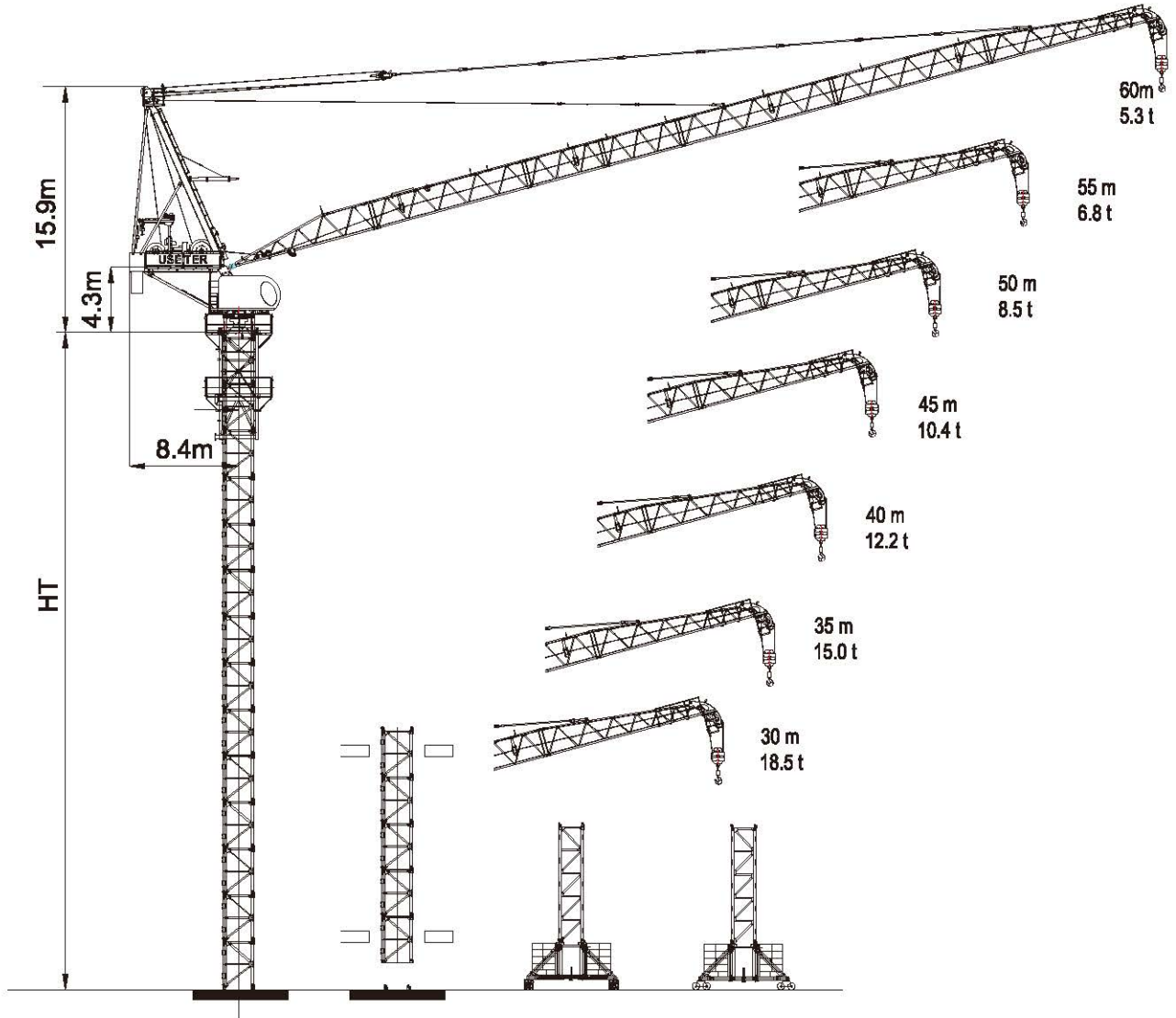


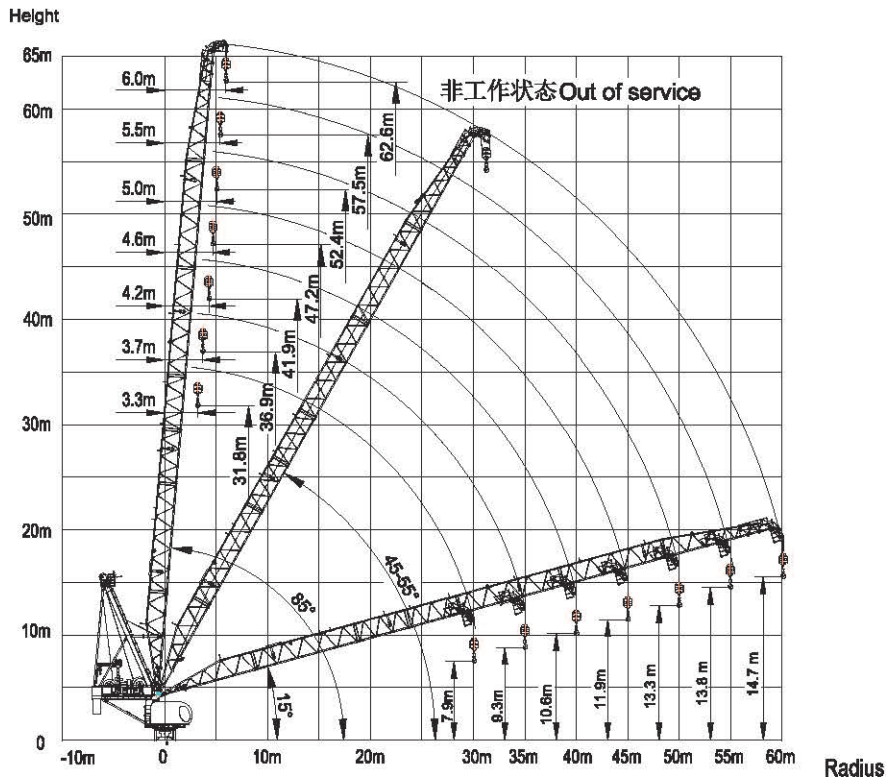
LTC6053-24



HT: 塔身高度 Height of tower

HH: 吊钩高度 Height of hook

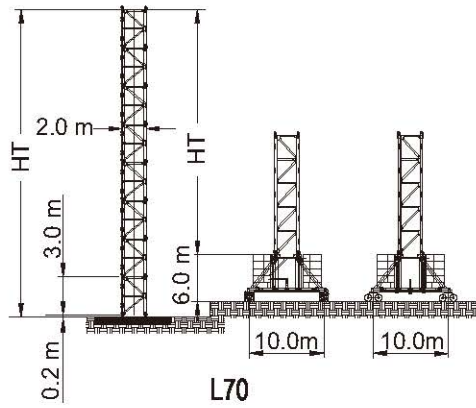
起重臂角度 / Angle of jib



起重性能 / Load Capacity

起重臂 JIB	最大起重量 Max Load		幅度 / Radius								
	t	m	25	30	35	40	45	50	55	60	
60	⊕	12.00	40.21	12.00	12.00	12.00	12.00	9.90	8.11	6.62	5.30
55	⊕	12.00	40.53	12.00	12.00	12.00	12.00	10.09	8.33	6.80	
	⊗	18.00	29.13	18.00	17.30	13.90	11.32	9.29	7.62	6.30	
50	⊕	12.00	41.43	12.00	12.00	12.00	12.00	10.43	8.56		
	⊗	24.00	24.16	22.98	18.08	14.53	11.82	9.67	8.00		
45	⊕	12.00	41.56	12.00	12.00	12.00	12.00	10.40			
	⊗	24.00	24.21	23.05	18.19	14.66	11.95	9.90			
40	⊕	12.00	40.00	12.00	12.00	12.00	12.00				
	⊗	24.00	24.42	23.31	18.46	14.91	12.30				
35	⊕	12.00	35.00	12.00	12.00	12.00					
	⊗	24.00	24.60	23.52	18.44	15.00					
30	⊕	12.00	30.00	12.00	12.00						
	⊗	24.00	24.82	23.77	18.60						

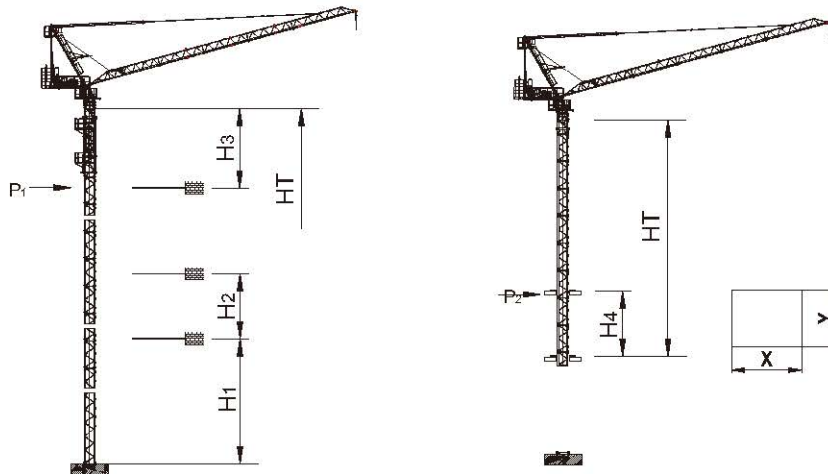
塔身 / Tower



塔身组成 Tower configuration

No. 序号	L70D	L70C	L70	HT(m) 高度 (m)	Jib reach(m) 臂长 (m)
1	1	5	8	42.2	45-60
2	1	5	9	45.2	30-40

爬升 / Climbing



电梯井最小安装尺寸

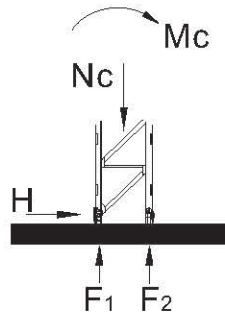
Min installation dimension of elevator shaft

幅度 Radius(m)	H ₁ (m)	H ₂ (m)	H ₃ (m)	HT _{max} [※] (m)	P1 _{max} (kN)
45-60	34.70	24.0	31.5	420.2	491
40-30	37.70	27.0	34.5	426.2	502

幅度 Radius(m)	H _{4min} (m)	HT _{max} (m)	P2 _{max} (kN)	X (m)	Y (m)
45-60	42.2	14	526.5	2.8	2.4
40-30	45.2	15	532.2	2.8	2.4

※HH > HH_{max} 请与我们联系 Contact with us, please.

基础 /Foundation



塔身 Tower	高度 (m) HH (m)	幅度 Radius(m)	基础载荷 Foundation loading			地脚反力 Corner forces	
			Mc (kN.m)	Nc (kN)	H (kN)	F ₁ (kN)	F ₂ (kN)
L70	42.2	60-45	8133	1854	256	-2412	3339
	45.2	40-30	8146	1906	247	-2404	3357

非工作状态 Out of service

回转力矩 /Slewing Moment

Ms = 818 kNm (for jib lengths 60m)

(工作状态 In service)

机构性能 /Mechanisms Specification

机构 Mechanisms		⌀		⊙			电机 Motor
		t	m/min	t	m/min		
起升 Hoisting		12.0	53.0	24.0	26.5	500m > 500m*	132kW
		7.2	80.0	14.4	40.0		
		3.5	106.0	7.0	53.0		
变幅 Luffing		1.9 min(15-85)					90 kW
回转 Slewing		0.7 r/min					7.5 × 3kW

电源 Power	总功率 Necessary Electric Power
380V(± 5%) 50Hz	370 kVA

* 请与我们联系 Contact with us,please.

数据可能有所调整，以产品说明书为准。

Relative parameter might be adjusted. Final parameter is subject to its instruction manual.