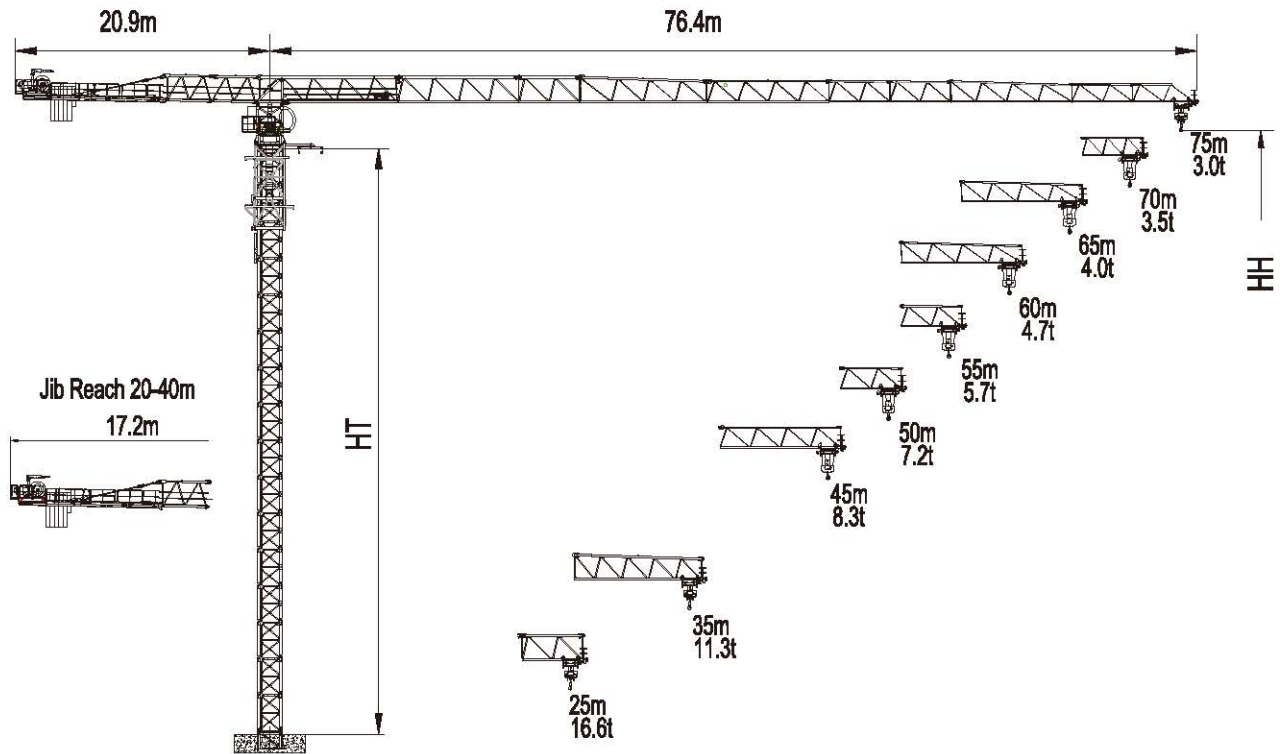


TTC7530-20



HT: 塔身高度 Height of tower

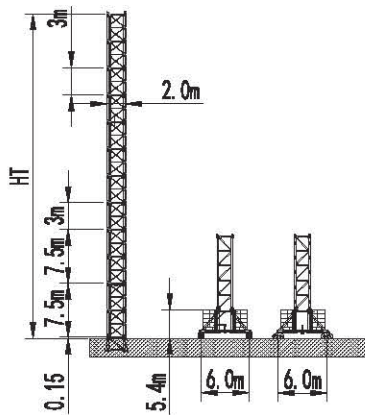
HH: 吊钩高度 Height of hook

起重性能 / Load Capacity

JIB (m)	Max Load		Jib Reach														
	t	m	16	18	20	25	30	35	40	45	50	55	60	65	70	75	
75	☞	10.00	29.31	10.00	10.00	10.00	10.00	9.73	8.10	6.89	5.96	5.21	4.61	4.10	3.68	3.31	3.00
	☞☞	20.00	16.12	20.00	17.63	15.61	12.05	9.72	8.07	6.84	5.90	5.14	4.53	4.02	3.59	3.22	2.90
70	☞	10.00	30.09	10.00	10.00	10.00	10.00	10.00	8.38	7.14	6.19	5.43	4.82	4.30	3.87	3.50	
	☞☞	20.00	16.46	20.00	18.06	16.01	12.39	10.01	8.33	7.09	6.12	5.36	4.73	4.21	3.77	3.40	
65	☞	10.00	30.52	10.00	10.00	10.00	10.00	10.00	8.53	7.29	6.34	5.57	4.95	4.44	4.00		
	☞☞	20.00	16.61	20.00	18.25	16.20	12.55	10.17	8.48	7.23	6.26	5.49	4.86	4.34	3.90		
60	☞	10.00	31.80	10.00	10.00	10.00	10.00	10.00	8.96	7.67	6.67	5.88	5.24	4.70			
	☞☞	20.00	17.23	20.00	19.03	16.90	13.12	10.64	8.90	7.60	6.59	5.79	5.14	4.60			
55	☞	10.00	33.87	10.00	10.00	10.00	10.00	10.00	9.63	8.27	7.22	6.38	5.70				
	☞☞	20.00	18.22	20.00	20.00	18.02	14.03	11.41	9.57	8.19	7.13	6.29	5.60				
50	☞	10.00	37.51	10.00	10.00	10.00	10.00	10.00	10.00	9.30	8.13	7.20					
	☞☞	20.00	20.10	20.00	20.00	20.00	15.69	12.78	10.74	9.21	8.04	7.10					
45	☞	10.00	38.19	10.00	10.00	10.00	10.00	10.00	10.00	9.49	8.30						
	☞☞	20.00	20.44	20.00	20.00	20.00	15.99	13.03	10.95	9.40	8.20						
35	☞	10.00	35.00	10.00	10.00	10.00	10.00	10.00	10.00								
	☞☞	20.00	21.01	20.00	20.00	20.00	16.48	13.45	11.30								
25	☞	10.00	25.00	10.00	10.00	10.00	10.00										
	☞☞	20.00	21.14	20.00	20.00	20.00	16.60										

★配置专用臂架，可实现 40m、30m 幅度，如果需要请提前与我们联系。

塔身 / Tower

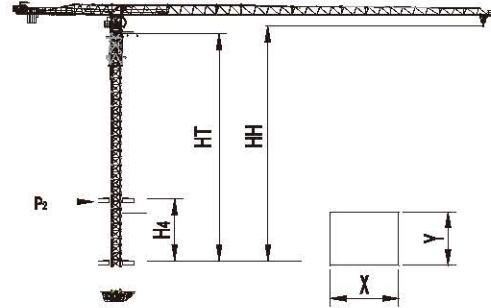
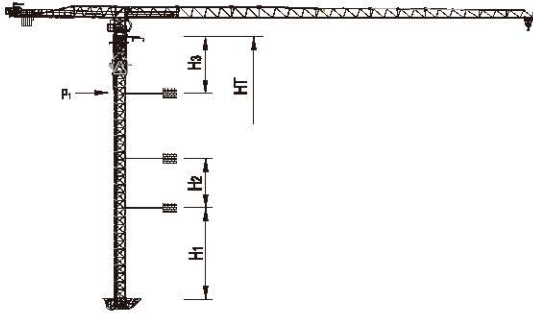


L69

塔身组成 Tower configuration

塔身 Tower	基础节 Base mast		基础节 Base mast		加强节 Mast		标准节 Mast		HT m	HH m
	规格 Type	数量 Quantity	规格 Type	数量 Quantity	规格 Type	数量 Quantity	规格 Type	数量 Quantity		
L69	L69G2	1	L69G1	1	L69B	1	L69	14	60	60.9

爬升 / Climbing

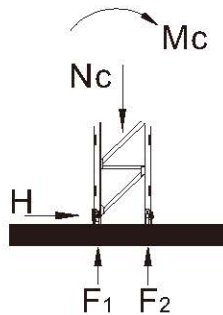


电梯井最小安装尺寸
Min installation dimension of elevator shaft

塔身 Tower	H ₁ (m)	H ₂ (m)	H ₃ (m)	HT _{max} (m)	HH _{max} ※ (m)	P1 _{max} (kN)	塔身 Tower	H _{4min} (m)	HT _{max} (m)	HH _{max} (m)	P2 _{max} (kN)	X (m)	Y (m)
L69	49.7	30.0	37.5	261.0	262.0	369	L69	16.0	48.0	49.0	426	2.6	2.2

※HH > HH_{max} 请与我们联系 Contact with us, please.

基础 / Foundation



塔身 Tower	高度 (m) HH (m)	幅度 Radius(m)	基础载荷 Foundation loading			地脚反力 Corner forces	
			Mc (kN.m)	Nc (kN)	H (kN)	F ₁ (kN)	F ₂ (kN)
L69	60.9	75	7550	1067	237.9	-2403	2937








非工作状态 Out of service

回转力矩 / Slewing Moment

Ms = 615 kNm (for jib lengths 75m)

(工作状态 In service)

机构性能 /Mechanisms Specification

机构 Mechanisms		Ⓔ		Ⓔ			电机 Motor
		t	m/min	t	m/min		
起升 Hoisting		10.0	44.0	20.0	22.0	600m > 600m*	90kW
		6.0	66.0	12.0	33.0		
		3.5	88.0	7.0	44.0		
起升 Hoisting		10.0	46.0	20.0	23.0	1000m > 1000m*	110kW
		6.4	76.0	12.8	38.0		
		3.2	102.0	6.4	51.0		
起升 Hoisting		10.0	36.0	20.0	18.0	750m > 750m*	75kW
		4.4	66.0	8.8	33.0		
		2.8	87.0	5.6	44.0		
		1.6	110.0	3.2	55.0		
变幅 Trolleying		65 m/min					11 kW
回转 Slewing		0.67 r/min					3 × 5.5kW
行走 Traveling		25 m/min					4 × 5.2 kW

电源 Power	总功率 Necessary Electric Power
380V(± 5%) 50Hz	165/195/145 kVA

* 请与我们联系 Contact with us, please.

数据可能有所调整，以产品说明书为准。

Relative parameter might be adjusted. Final parameter is subject to its instruction manual.