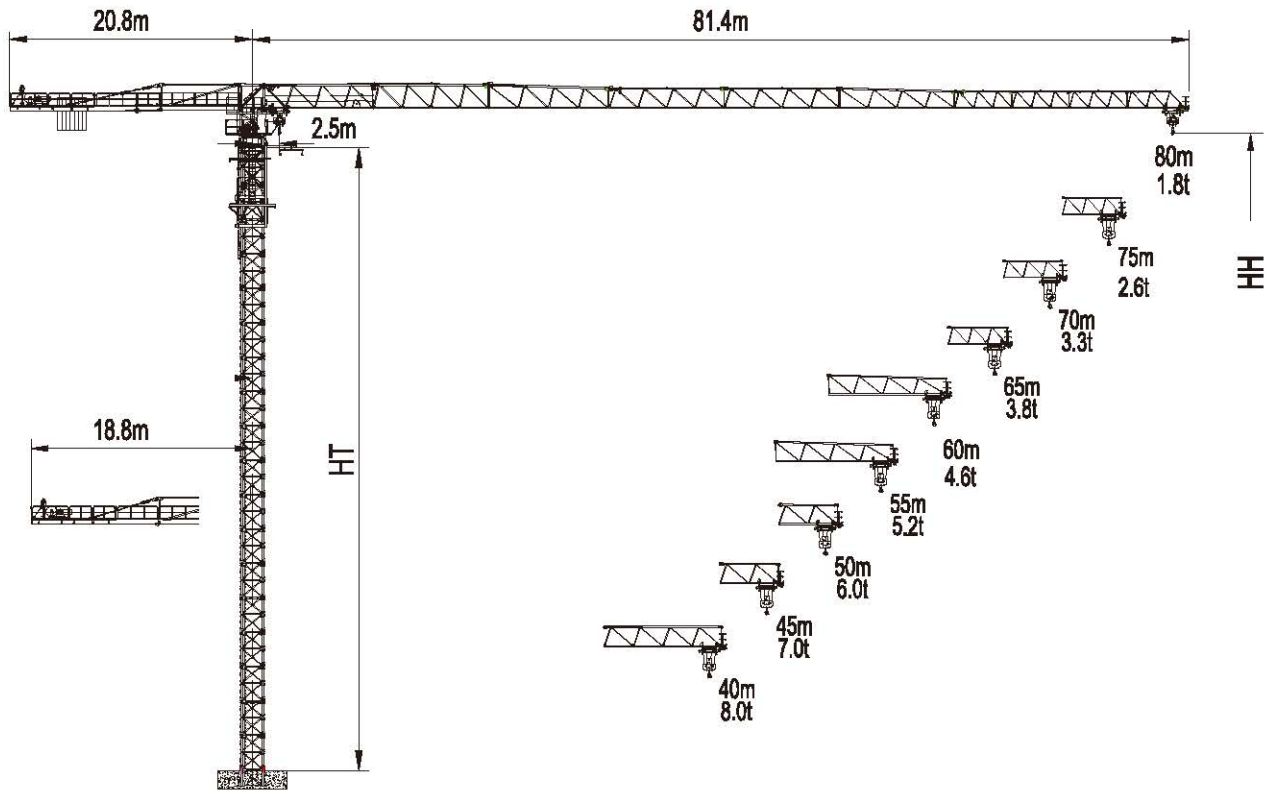


TTC8018-16



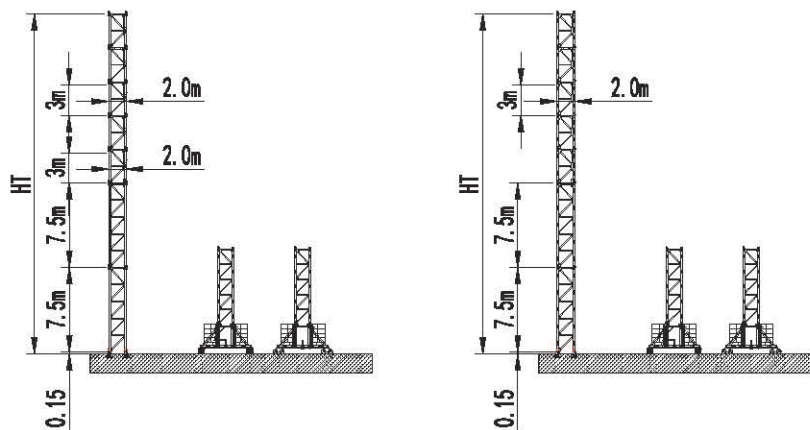
HT: 塔身高度 Height of tower

HH: 吊钩高度 Height of hook

起重性能 / Load Capacity

工作幅度 Radius(m)	最大起重量 Max Load	幅度 / 起重量 Radius/ Load															
		R(m)	L(t)	15	20	25	30	35	40	45	50	55	60	65	70	75	80
80	☐	23.60	8.00	8.00	8.00	7.52	6.13	5.14	4.40	3.82	3.36	2.98	2.67	2.40	2.17	1.97	1.80
	☐	12.20	16.00	12.77	9.30	7.22	5.83	4.84	4.10	3.52	3.06	2.68	2.37	2.10	1.87	1.67	1.50
75	☐	28.90	8.00	8.00	8.00	8.00	7.69	6.47	5.57	4.86	4.29	3.83	3.44	3.12	2.84	2.60	
	☐	14.90	16.00	15.86	11.62	9.08	7.39	6.17	5.27	4.56	3.99	3.53	3.14	2.82	2.54	2.30	
70	☐	32.40	8.00	8.00	8.00	8.00	8.00	7.34	6.32	5.55	4.92	4.40	3.97	3.16	3.30		
	☐	16.50	16.00	16.00	13.10	10.27	8.39	7.04	6.02	5.25	4.62	4.10	3.67	3.31	3.00		
65	☐	33.60	8.00	8.00	8.00	8.00	8.00	7.65	6.61	5.80	5.15	4.62	4.17	3.80			
	☐	17.10	16.00	16.00	13.70	10.78	8.84	7.45	6.41	5.60	4.95	4.42	3.97	3.60			
60	☐	36.40	8.00	8.00	8.00	8.00	8.00	8.00	7.22	6.35	5.65	5.08	4.60				
	☐	18.40	16.00	16.00	14.88	11.74	9.64	8.14	7.02	6.15	5.45	4.88	4.40				
55	☐	37.40	8.00	8.00	8.00	8.00	8.00	8.00	7.43	6.52	5.79	5.20					
	☐	18.90	16.00	16.00	15.05	11.82	9.70	8.21	7.10	6.24	5.56	5.00					
50	☐	38.40	8.00	8.00	8.00	8.00	8.00	8.00	7.66	6.74	6.00						
	☐	19.40	16.00	16.00	15.76	12.44	10.23	8.65	7.46	6.54	5.80						
45	☐	40.00	8.00	8.00	8.00	8.00	8.00	8.00	8.00	7.00							
	☐	20.00	16.00	16.00	16.00	12.63	10.42	8.86	7.70	6.80							
40	☐	40.00	8.00	8.00	8.00	8.00	8.00	8.00	8.00								
	☐	20.70	16.00	16.00	16.00	13.30	10.95	9.26	8.00								

塔身 / Tower



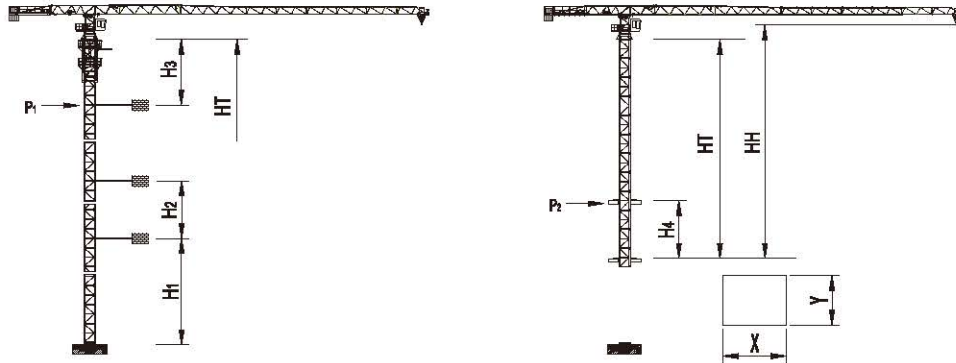
L68B1 (A)

L68B1 (B)

塔身组成 Tower configuration

塔身 Tower	基础节 Base mast		基础节 Base mast		过渡节 Base mast		标准节 Mast		HT m	HH m
	规格 Type	数量 Quantity	规格 Type	数量 Quantity	规格 Type	数量 Quantity	规格 Type	数量 Quantity		
L68B1(A)	L69G2	1	L69G1	1	L68G0	1	L68B1	13	57.1	58.6
L68B1(B)	L68G2	1	L68G1	1			L68B1	12	51.1	52.0

爬升 / Climbing

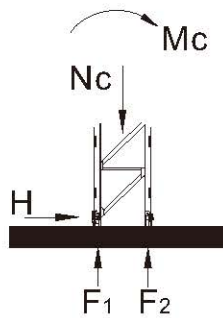


电梯井最小安装尺寸
Min installation dimension of elevator shaft

塔身 Tower	H ₁ (m)	H ₂ (m)	H ₃ (m)	HT _{max} (m)	HH _{max} [※] (mm)	P1 _{max} (kN)	塔身 Tower	H ₄ (m)	HT _{max} (m)	HH _{max} (m)	P2 _{max} (kN)	X (m)	Y (m)
L68B1(A)	46.5	24.0	34.6	249.1	250.6	311	L68B1(A)	14.0	39.1	40.0	243	2.6	2.2
L68B1(B)	40.5	24.0	34.6	219.1	220.0	234	L68B1(B)	14.0	39.1	40.0	243	2.6	2.2

※HH > HH_{max} 请与我们联系 Contact with us, please.

基础 / Foundation



塔身 Tower	高度 (m) HH (m)	幅度 Radius(m)	基础载荷 Foundation loading			地脚反力 Corner forces	
			Mc (kN.m)	Nc (kN)	H (kN)	F ₁ (kN)	F ₂ (kN)
L68B1(A)	58.6	80	6564	1060	211	-2056	2586
L68B1(B)	52.0	80	5904	986	182	-1848	2341



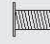




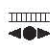
非工作状态 Out of service

回转力矩 /Slewing Moment

Ms = 615 kNm (for jib lengths 80m)

(工作状态 In service)

机构性能 /Mechanisms Specification

机构 Mechanisms							电机 Motor
		t	m/min	t	m/min		
起升 Hoisting		8.0	43.0	16.0	21.5	600m > 600m*	75kW
		5.0	64.4	10.0	32.2		
		3.2	86.0	6.4	43.0		
起升 Hoisting		8.0	39.0	16.0	19.0	900m > 900m*	65kW
		3.8	70.0	7.6	35.0		
		2.8	94.0	5.6	47.0		
		1.7	117.0	3.4	59.0		
变幅 Trolleying		65m/min					7.5 kW
回转 Slewing		0.67 r/min					3 × 5.5kW
行走 Traveling		25 m/min					4 × 5.2 kW

电源 Power	总功率 Necessary Electric Power
380V(± 5%) 50Hz	140/125 kVA

* 请与我们联系 Contact with us, please.

数据可能有所调整，以产品说明书为准。

Relative parameter might be adjusted. Final parameter is subject to its instruction manual.