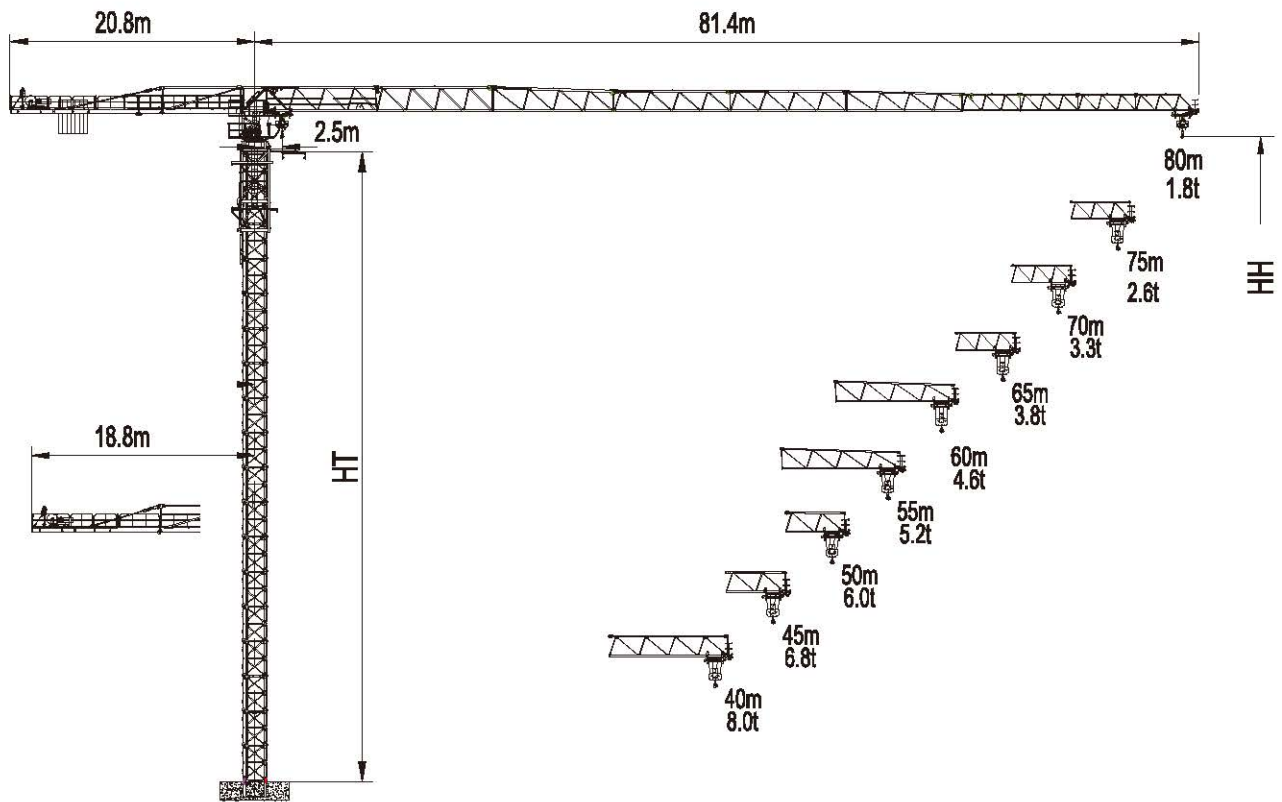


TTC8018-12



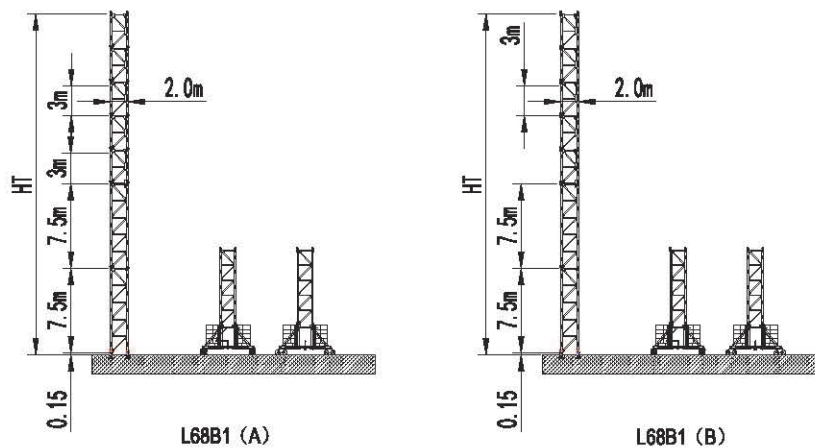
HT: 塔身高度 Height of tower

HH: 吊钩高度 Height of hook

起重性能 / Load Capacity

工作幅度 Radius(m)	最大起重量 Max Load	幅度 / 起重量 Radius/ Load															
		R(m)	L(t)	15	20	25	30	35	40	45	50	55	60	65	70	75	80
80	☐	30.9	6.00	6.00	6.00	6.00	6.00	5.19	4.43	3.84	3.37	2.99	2.67	2.40	2.17	1.97	1.80
	☒	16.7	12.00	12.00	9.77	7.50	6.02	4.97	4.19	3.58	3.10	2.71	2.39	2.11	1.88	1.68	1.50
75	☐	37.5	6.00	6.00	6.00	6.00	6.00	6.00	5.57	4.86	4.29	3.83	3.44	3.12	2.84	2.60	
	☒	19.8	12.00	12.00	11.91	9.22	7.45	6.21	5.28	4.56	3.99	3.53	3.14	2.82	2.54	2.30	
70	☐	42.0	6.00	6.00	6.00	6.00	6.00	6.00	6.00	5.55	4.92	4.40	3.97	3.61	3.30		
	☒	21.9	12.00	12.00	12.00	10.35	8.41	7.04	6.02	5.23	4.60	4.09	3.66	3.31	3.00		
65	☐	43.7	6.00	6.00	6.00	6.00	6.00	6.00	6.00	5.80	5.15	4.62	4.17	3.80			
	☒	23.0	12.00	12.00	12.00	10.97	8.93	7.50	6.43	5.61	4.95	4.42	3.97	3.60			
60	☐	47.4	6.00	6.00	6.00	6.00	6.00	6.00	6.00	6.00	5.54	5.08	4.60				
	☒	24.7	12.00	12.00	12.00	11.87	9.70	8.16	7.03	6.15	5.47	4.87	4.40				
55	☐	48.7	6.00	6.00	6.00	6.00	6.00	6.00	6.00	6.00	5.82	5.20					
	☒	25.5	12.00	12.00	12.00	12.00	10.03	8.43	7.24	6.33	5.60	5.00					
50	☐	50.0	6.00	6.00	6.00	6.00	6.00	6.00	6.00	6.00	6.00						
	☒	26.3	12.00	12.00	12.00	12.00	10.37	8.73	7.50	6.55	5.80						
45	☐	45.0	6.00	6.00	6.00	6.00	6.00	6.00	6.00	6.00							
	☒	27.2	12.00	12.00	12.00	12.00	10.75	9.05	7.78	6.80							
40	☐	40.0	6.00	6.00	6.00	6.00	6.00	6.00	6.00								
	☒	27.8	12.00	12.00	12.00	12.00	11.05	9.30	8.00								

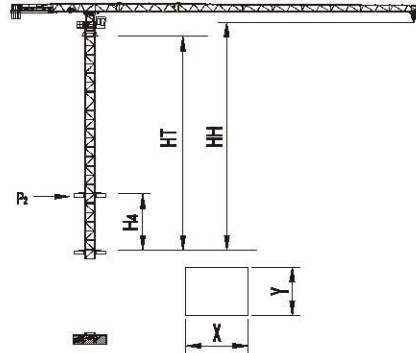
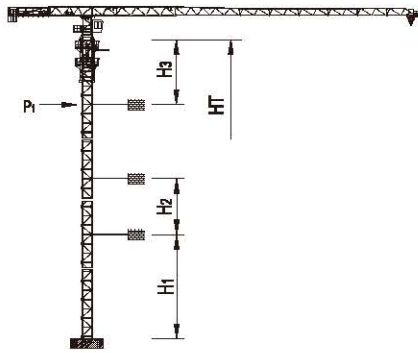
塔身 / Tower



塔身组成 Tower configuration

塔身 Tower	基础节 Base mast		基础节 Base mast		过渡节 Base mast		标准节 Mast		HT m	HH m
	规格 Type	数量 Quantity	规格 Type	数量 Quantity	规格 Type	数量 Quantity	规格 Type	数量 Quantity		
L68B1(A)	L69G2	1	L69G1	1	L68G0	1	L68B1	13	57.1	58.6
L68B1(B)	L68G2	1	L68G1	1			L68B1	12	51.1	52.0

爬升 / Climbing



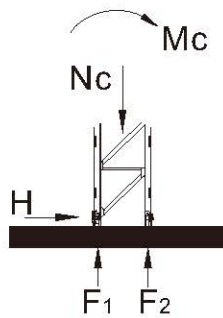
电梯井最小安装尺寸
Min installation dimension of elevator shaft

塔身 Tower	H ₁ (m)	H ₂ (m)	H ₃ (m)	HT _{max} (m)	HH _{max} ※ (m)	P1 _{max} (kN)
L68B1(A)	46.5	24.0	34.6	249.1	250.6	311
L68B1(B)	40.5	24.0	34.6	219.1	220.0	234

塔身 Tower	H ₄ (m)	HT _{max} (m)	HH _{max} (m)	P2 _{max} (kN)	X (m)	Y (m)
L68B1(A)	14.0	39.1	40.0	243	2.6	2.2
L68B1(B)	14.0	39.1	40.0	243	2.6	2.2

※HH > HH_{max} 请与我们联系 Contact with us, please.

基础 / Foundation



塔身 Tower	高度 (m) HH (m)	幅度 Radius(m)	基础载荷 Foundation loading			地脚反力 Corner forces	
			Mc (kN.m)	Nc (kN)	H (kN)	F ₁ (kN)	F ₂ (kN)
L68B1(A)	58.6	80	6564	1060	211	-2056	2586
L68B1(B)	52.0	80	5924	986	182	-1848	2341








非工作状态 Out of service

回转力矩 /Slewing Moment

Ms = 615 kNm (for jib lengths 80m)

(工作状态 In service)

机构性能 /Mechanisms Specification

机构 Mechanisms							电机 Motor
		t	m/min	t	m/min		
起升 Hoisting		6.0	46.3	12.0	23.2	600m > 600m*	55kW
		3.8	69.5	7.6	34.7		
		2.0	92.6	4.0	46.3		
变幅 Trolleying		65 m/min					5.5 kW
回转 Slewing		0.67 r/min					3 × 5.5kW
行走 Traveling		25 m/min					4 × 5.2 kW

电源 Power	总功率 Necessary Electric Power
380V(±5%) 50Hz	110 kVA

* 请与我们联系 Contact with us, please.

数据可能有所调整，以产品说明书为准。

Relative parameter might be adjusted. Final parameter is subject to its instruction manual.