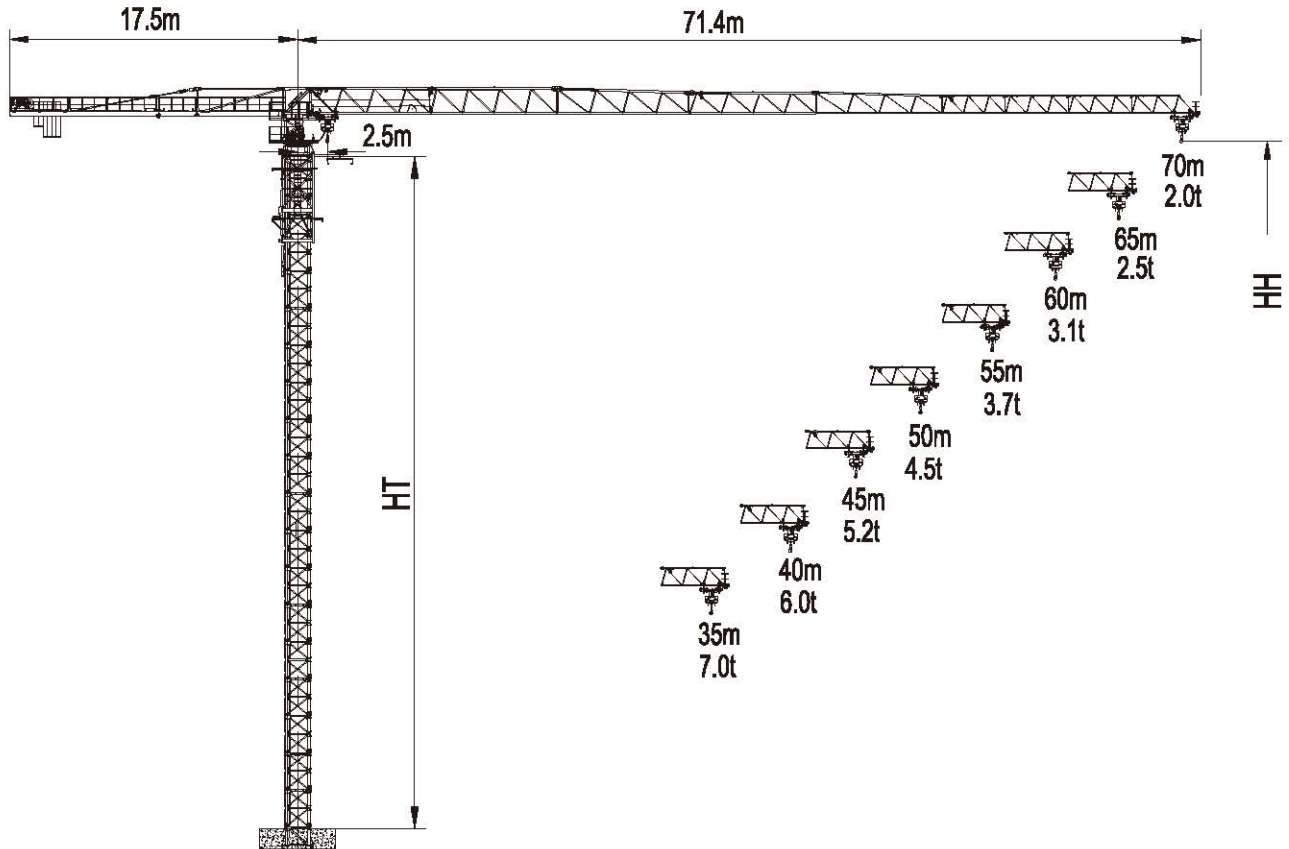


# TTC7020-12



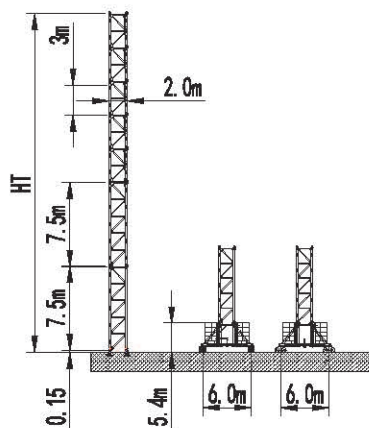
HT: 塔身高度 Height of tower

HH: 吊钩高度 Height of hook

起重性能 / Load Capacity

工作幅度 Radius(m)	最大起重量 Max Load	幅度 / 起重量 Radius/ Load													
		R(m)	L(t)	15	20	25	30	35	40	45	50	55	60	65	70
70	☐	31.70	6.00	6.00	6.00	6.00	6.00	5.30	4.47	3.82	3.31	2.89	2.54	2.25	2.00
	☒	16.70	12.00	12.00	9.70	7.39	5.89	4.83	4.04	3.43	3.94	2.54	2.22	1.94	1.70
65	☐	33.90	6.00	6.00	6.00	6.00	6.00	5.77	4.88	4.18	3.63	3.19	2.81	2.50	
	☒	18.00	12.00	12.00	10.58	8.10	6.47	5.32	4.47	3.81	3.28	2.86	2.50	2.20	
60	☐	36.30	6.00	6.00	6.00	6.00	6.00	6.00	5.31	4.57	3.98	3.50	3.20		
	☒	19.30	12.00	12.00	11.51	8.83	7.08	5.84	4.92	4.21	3.64	3.18	2.80		
55	☐	37.80	6.00	6.00	6.00	6.00	6.00	6.00	5.59	4.82	4.20	3.70			
	☒	20.20	12.00	12.00	12.00	9.32	7.48	6.19	5.22	4.48	3.88	3.40			
50	☐	39.40	6.00	6.00	6.00	6.00	6.00	6.00	5.84	5.04	4.50				
	☒	21.30	12.00	12.00	12.00	9.97	8.02	6.64	5.62	4.82	4.20				
45	☐	40.00	6.00	6.00	6.00	6.00	6.00	6.00	5.95	5.20					
	☒	21.40	12.00	12.00	12.00	9.70	7.92	6.66	5.72	4.90					
40	☐	40.00	6.00	6.00	6.00	6.00	6.00	6.00	6.00						
	☒	21.50	12.00	12.00	12.00	9.89	8.06	6.76	5.80						
35	☐	40.00	6.00	6.00	6.00	6.00	6.00	6.00							
	☒	21.70	12.00	12.00	12.00	10.26	8.33	7.00							

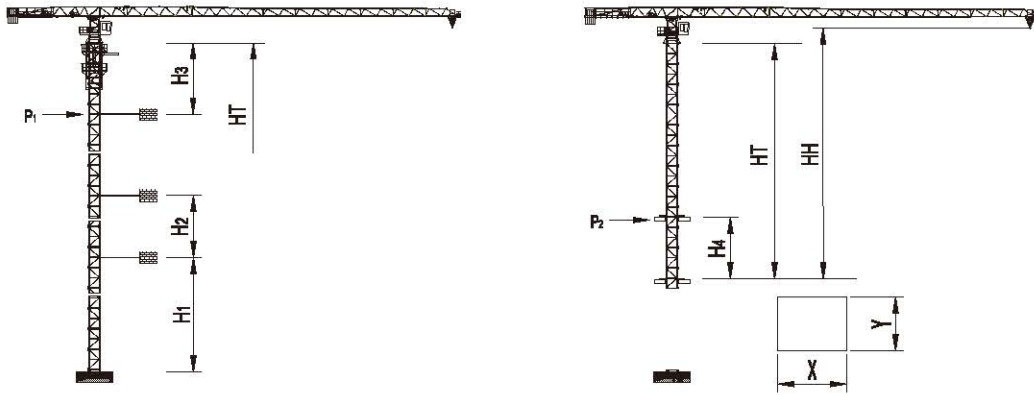
塔身 / Tower



塔身组成  
Tower configuration

塔身 Tower	基础节 Base mast		基础节 Base mast		标准节 Mast		HT m	HH m
	规格 Type	数量 Quantity	规格 Type	数量 Quantity	规格 Type	数量 Quantity		
L68B2	L68G2	1	L68G1	1	L68B2	15	60.1	61.0

爬升 / Climbing

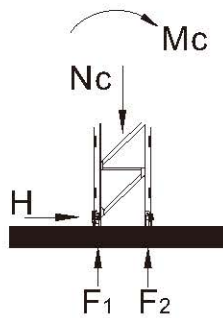


电梯井最小安装尺寸  
Min installation dimension of elevator shaft

塔身 Tower	H <sub>1</sub> (m)	H <sub>2</sub> (m)	H <sub>3</sub> (m)	HT <sub>max</sub> (m)	HH <sub>max</sub> <sup>※</sup> (m)	P1 <sub>max</sub> (kN)	塔身 Tower	H <sub>4</sub> (m)	HT <sub>max</sub> (m)	HH <sub>max</sub> (m)	P2 <sub>max</sub> (kN)	X (m)	Y (m)
L68B2	45.5	20.0	40.6	246.1	247.0	285	L68B2	14.0	42.1	40.0	292	2.6	2.2

※HH > HH<sub>max</sub> 请与我们联系 Contact with us, please.

基础 / Foundation



塔身 Tower	高度 (m) HH (m)	幅度 Radius(m)	117 基础载荷 Foundation loading			地脚反力 Corner forces	
			Mc (kN.m)	Nc (kN)	H (kN)	F <sub>1</sub> (kN)	F <sub>2</sub> (kN)
L68B2	61.0	70	5848	896	189	-1844	2294








非工作状态 Out of service

## 回转力矩 /Slewing Moment

Ms = 530 kNm (for jib lengths 70m)

(工作状态 In service)

## 机构性能 /Mechanisms Specification

机构 Mechanisms							电机 Motor
		t	m/min	t	m/min		
起升 Hoisting		6.0	46.3	12.0	23.2	600m > 600m*	55kW
		3.8	69.5	7.6	34.7		
		2.0	92.6	4.0	46.3		
变幅 Trolleying		65 m/min					5.5 kW
回转 Slewing		0.67 r/min					2 × 5.5kW
行走 Traveling		25 m/min					4 × 5.2 kW

电源 Power	总功率 Necessary Electric Power
380V(± 5%) 50Hz	100 kVA

\* 请与我们联系 Contact with us, please.

数据可能有所调整，以产品说明书为准。

Relative parameter might be adjusted. Final parameter is subject to its instruction manual.