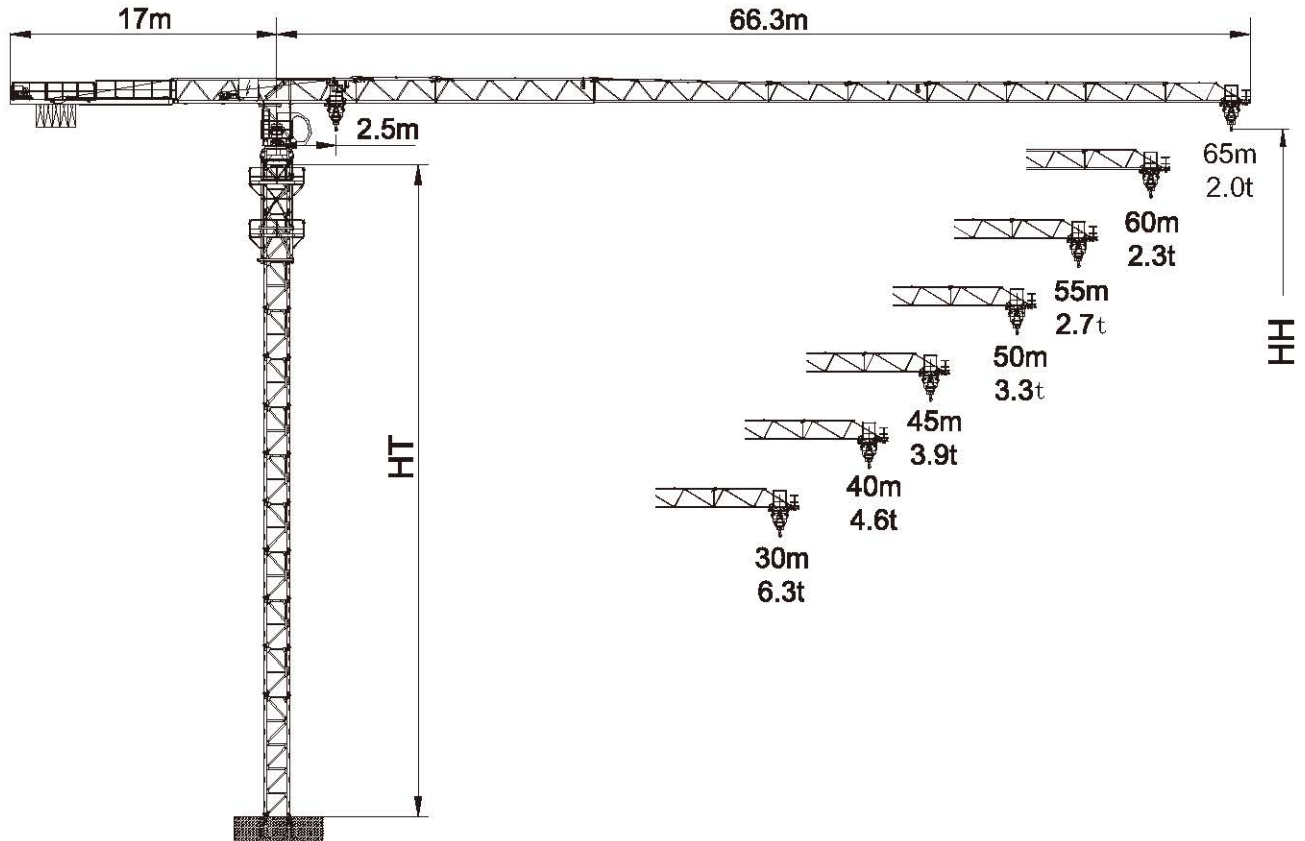


TTC6520-10



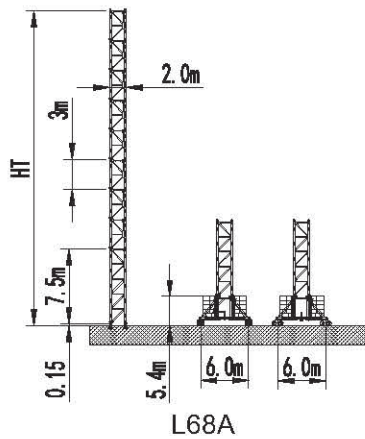
HT: 塔身高度 Height of tower

HH: 吊钩高度 Height of hook

起重性能 / Load Capacity

工作幅度 Radius(m)	最大起重量 Max Load		幅度 / 起重量 Radius/ Load												
	R(m)	L(t)	18	20	22	25	30	35	40	45	50	55	60	65	
65	☐	31.53	5.00	5.00	5.00	5.00	5.00	5.00	5.00	4.42	3.25	2.84	2.51	2.23	2.00
	☒	16.96	10.00	9.34	9.34	8.26	7.39	6.35	5.10	4.22	3.05	2.64	2.31	2.03	1.80
60	☐	32.23	5.00	5.00	5.00	5.00	5.00	5.00	5.00	4.53	3.34	2.92	2.58	2.30	
	☒	17.33	10.00	9.57	9.57	8.47	7.58	6.52	5.24	4.33	3.14	2.72	2.38	2.10	
55	☐	33.34	5.00	5.00	5.00	5.00	5.00	5.00	5.00	4.72	3.48	3.05	2.70		
	☒	17.91	10.00	9.94	9.94	8.81	7.88	6.79	5.46	4.52	3.28	2.85	2.50		
50	☐	35.47	5.00	5.00	5.00	5.00	5.00	5.00	5.00	5.00	3.76	3.30			
	☒	19.03	10.00	10.00	10.00	9.44	8.46	7.29	5.88	4.88	3.56	3.10			
45	☐	37.32	5.00	5.00	5.00	5.00	5.00	5.00	5.00	5.00	4.00				
	☒	20.00	10.00	10.00	10.00	10.00	8.97	7.73	6.24	5.19	3.80				
40	☐	37.41	5.00	5.00	5.00	5.00	5.00	5.00	5.00	5.00					
	☒	20.05	10.00	10.00	10.00	10.00	8.99	7.76	6.26	5.21					
30	☐	30.00	5.00	5.00	5.00	5.00	5.00	5.00	5.00						
	☒	20.15	10.00	10.00	10.00	10.00	9.04	7.80	6.30						

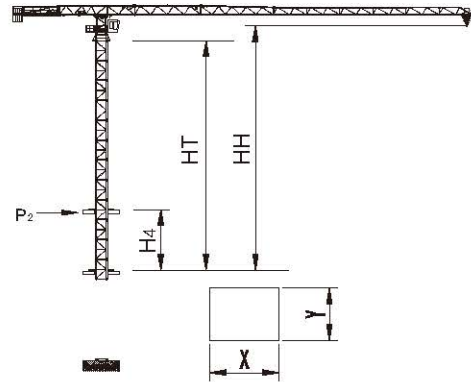
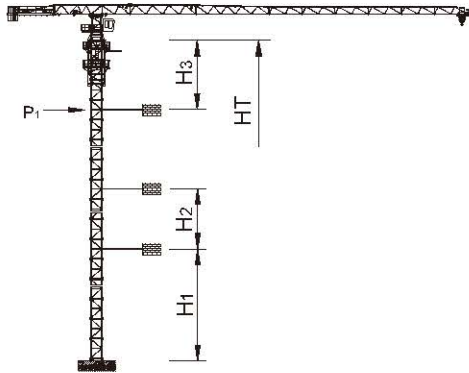
塔身 / Tower



塔身组成
Tower configuration

塔身 Tower	基础节 Base mast		标准节 Mast		HT m	HH m
	规格 Type	数量 Quantity	规格 Type	数量 Quantity		
L68A	L68G1	1	L68A	17	58.6	60.5

爬升 / Climbing



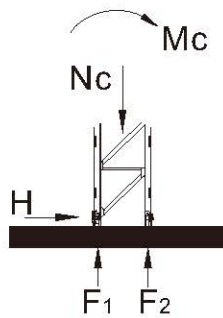
电梯井最小安装尺寸
Min installation dimension of elevator shaft

塔身 Tower	H ₁ (m)	H ₂ (m)	H ₃ (m)	HT _{max} (m)	HH _{max} [※] (m)	P1 _{max} (kN)
L68A	48.1	36.0	45.5	226.6	228.5	223

塔身 Tower	H ₄ (m)	HT _{max} (m)	HH _{max} (m)	P2 _{max} (kN)	X (m)	Y (m)
L68A	18.0	48.0	51.4	265	2.6	2.2

※HH > HH_{max} 请与我们联系 Contact with us, please.

基础 / Foundation



塔身 Tower	高度 (m) HH (m)	幅度 Radius(m)	117 基础载荷 Foundation loading			地脚反力 Corner forces	
			Mc (kN.m)	Nc (kN)	H (kN)	F ₁ (kN)	F ₂ (kN)
L68A	60.5	60	4520	778	117	-1308	1697








非工作状态 Out of service

回转力矩 /Slewing Moment

Ms = 295 kNm (for jib lengths 65m)

(工作状态 In service)

机构性能 /Mechanisms Specification

机构 Mechanisms							电机 Motor
		t	m/min	t	m/min		
起升 Hoisting		5.0	40.0	10.0	20.0	500m > 500m*	37kW
		3.2	60.0	6.4	30.0		
		2.2	80.0	4.4	40.0		
变幅 Trolleying		58 m/min					4 kW
回转 Slewing		0.64 r/min					2 × 5.5kW
行走 Traveling		12.5–25 m/min					4 × 2.6/5.2 kW

电源 Power	总功率 Necessary Electric Power
380V(± 5%) 50Hz	75 kVA

* 请与我们联系 Contact with us, please.

数据可能有所调整，以产品说明书为准。

Relative parameter might be adjusted. Final parameter is subject to its instruction manual.