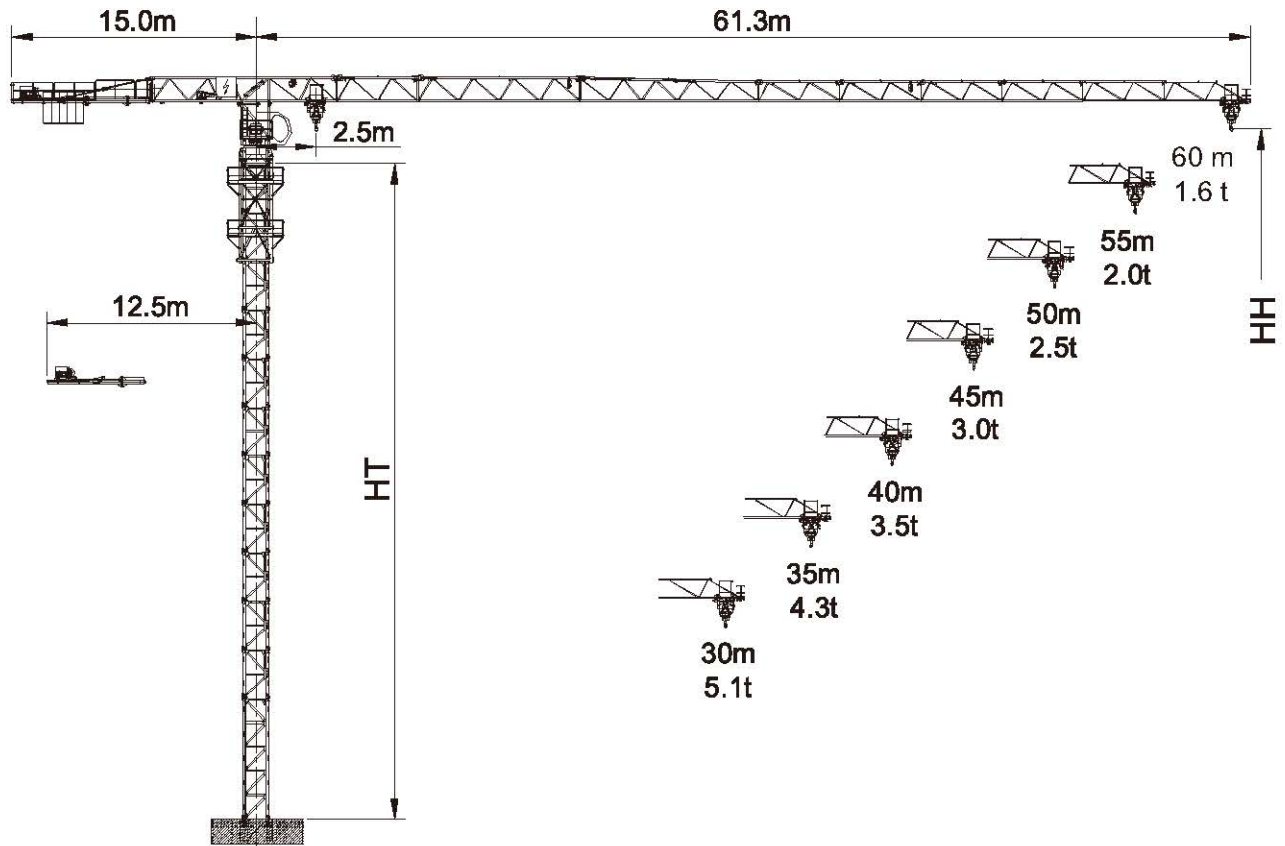


# TTC6016-10



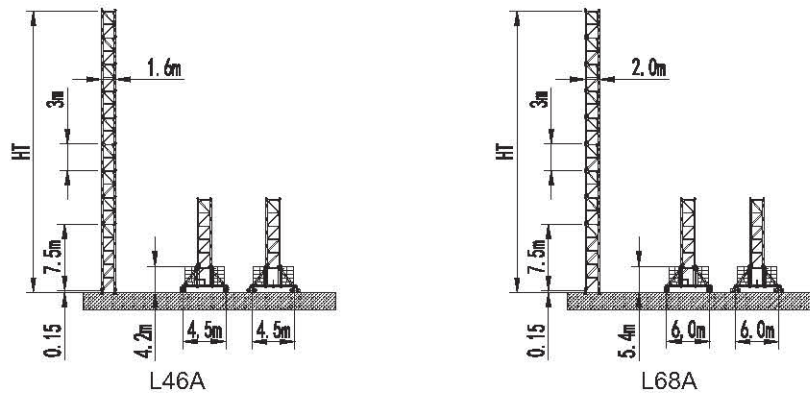
HT: 塔身高度 Height of tower

HH: 吊钩高度 Height of hook

起重性能 / Load Capacity

工作幅度 Radius(m)	最大起重量 Max Load	幅度 / 起重量 Radius/ Load														
		R(m)	L(t)	15	18	20	22	25	30	35	40	45	50	55	60	
60	☞	25.02	5.00	5.00	5.00	5.00	5.00	5.00	5.00	4.02	3.32	2.80	2.40	2.08	1.82	1.60
	☜	13.54	10.00	8.97	7.26	6.41	5.72	4.91	3.92	3.22	2.70	2.30	1.98	1.72	1.50	
55	☞	26.75	5.00	5.00	5.00	5.00	5.00	5.00	4.36	3.61	3.05	2.62	2.28	2.00		
	☜	14.57	10.00	9.67	7.83	6.93	6.19	5.32	4.26	3.51	2.95	2.52	2.18	1.90		
50	☞	28.63	5.00	5.00	5.00	5.00	5.00	5.00	4.73	3.93	3.33	2.87	2.50			
	☜	15.57	10.00	9.67	8.46	7.49	6.70	5.76	4.63	3.83	3.23	2.77	2.40			
45	☞	29.64	5.00	5.00	5.00	5.00	5.00	5.00	4.93	4.10	3.48	3.00				
	☜	16.11	10.00	10.00	8.80	7.80	6.98	6.01	4.83	4.00	3.38	2.90				
40	☞	29.79	5.00	5.00	5.00	5.00	5.00	5.00	4.96	4.12	3.50					
	☜	16.19	10.00	10.00	8.85	7.84	7.02	6.04	4.86	4.02	3.40					
35	☞	30.84	5.00	5.00	5.00	5.00	5.00	5.00	5.00	4.30						
	☜	16.74	10.00	10.00	9.21	8.16	7.30	6.29	5.07	4.20						
30	☞	30.00	5.00	5.00	5.00	5.00	5.00	5.00	5.00							
	☜	16.84	10.00	10.00	9.26	5.21	7.35	6.33	5.10							

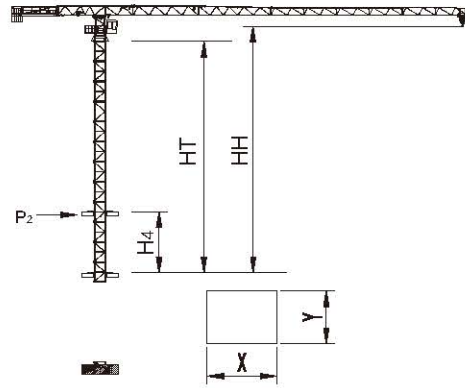
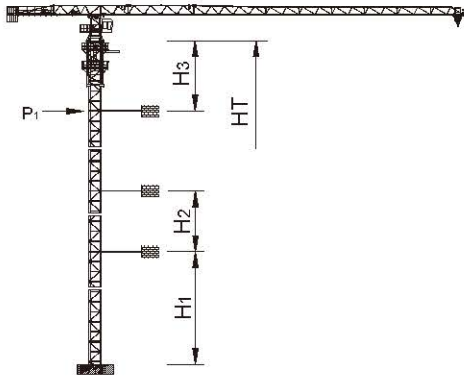
塔身 / Tower



塔身组成  
Tower configuration

塔身 Tower	基础节 Base mast		标准节 Mast		HT m	HH m
	规格 Type	数量 Quantity	规格 Type	数量 Quantity		
L46A	L46G	1	L46A	12	43.6	45.5
L68A	L68G1	1	L68A	17	58.6	60.5

爬升 / Climbing



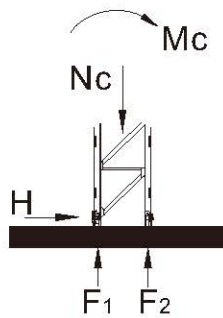
电梯井最小安装尺寸  
Min installation dimension of elevator shaft

塔身 Tower	H <sub>1</sub> (m)	H <sub>2</sub> (m)	H <sub>3</sub> (m)	HT <sub>max</sub> (m)	HH <sub>max</sub> <sup>※</sup> (m)	P1 <sub>max</sub> (kN)
L46A	33.1	24.0	34.5	163.6	165.5	159
L68A	48.1	36.0	46.5	226.6	228.5	220

塔身 Tower	H <sub>4</sub> (m)	HT <sub>max</sub> (m)	HH <sub>max</sub> (m)	P2 <sub>max</sub> (kN)	X (m)	Y (m)
L46A	14.0	37.5	39.4	162	2.2	1.8
L68A	18.0	48.0	51.4	241	2.6	2.2

※HH > HH<sub>max</sub> 请与我们联系 Contact with us, please.

基础 / Foundation



塔身 Tower	高度 (m) HH (m)	幅度 Radius(m)	基础载荷 Foundation loading			地脚反力 Corner forces	
			Mc (kN.m)	Nc (kN)	H (kN)	F <sub>1</sub> (kN)	F <sub>2</sub> (kN)
L46A	45.5	60	2077	531	90	-785	1051
L68A	60.5	60	3952	641	115	-1237	1558








非工作状态 Out of service

## 回转力矩 /Slewing Moment

Ms = 221 kNm (for jib lengths 60m)

(工作状态 In service)

## 机构性能 /Mechanisms Specification

机构 Mechanisms							电机 Motor
		t	m/min	t	m/min		
起升 Hoisting		5.0	40.0	10.0	20.0	500m > 500m*	37kW
		3.2	60.0	6.4	30.0		
		2.2	80.0	4.4	40.0		
变幅 Trolleying		58 m/min					4 kW
回转 Slewing		0.64 r/min					2 × 4kW
行走 Traveling		12.5–25 m/min					2 × 2.6/5.2 kW

电源 Power	总功率 Necessary Electric Power
380V(±5%) 50Hz	70 kVA

\* 请与我们联系 Contact with us, please.

数据可能有所调整，以产品说明书为准。

Relative parameter might be adjusted. Final parameter is subject to its instruction manual.