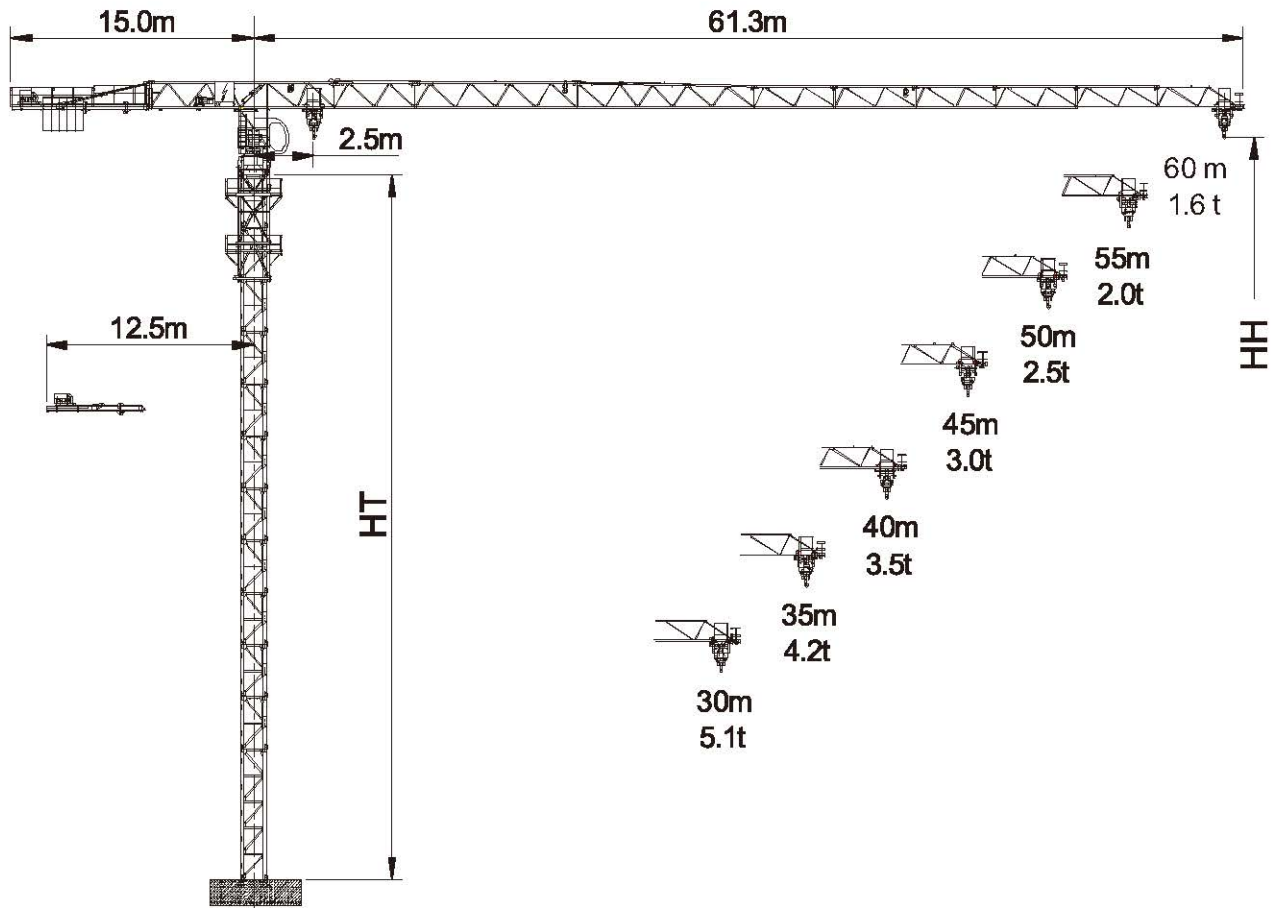


TTC6016-8



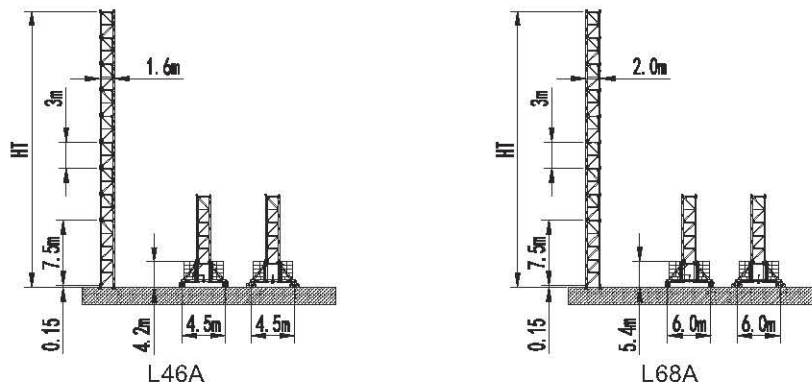
HT: 塔身高度 Height of tower

HH: 吊钩高度 Height of hook

起重性能 / Load Capacity

工作幅度 Radius(m)	最大起重量 Max Load		幅度 / 起重量 Radius/ Load												
	R(m)	L(t)	15	18	20	22	25	30	35	40	45	50	55	60	
60	☞	30.11	4.00	4.00	4.00	4.00	4.00	4.00	4.00	3.32	2.80	2.40	2.08	1.82	1.60
	☜	16.38	8.00	8.00	8.00	6.41	5.72	4.91	3.92	3.22	2.70	2.30	1.98	1.72	1.50
55	☞	32.20	4.00	4.00	4.00	4.00	4.00	4.00	4.00	3.61	3.05	2.62	2.28	2.00	
	☜	17.68	8.00	8.00	8.00	6.93	6.19	5.32	4.26	3.51	2.95	2.52	2.18	1.90	
50	☞	34.48	4.00	4.00	4.00	4.00	4.00	4.00	4.00	3.93	3.33	2.87	2.50		
	☜	18.90	8.00	8.00	8.00	7.49	6.70	5.76	4.63	3.83	3.23	2.77	2.40		
45	☞	35.71	4.00	4.00	4.00	4.00	4.00	4.00	4.00	4.00	3.48	3.00			
	☜	19.56	8.00	8.00	8.00	7.80	6.98	6.01	4.83	4.00	3.38	2.90			
40	☞	35.88	4.00	4.00	4.00	4.00	4.00	4.00	4.00	4.00	3.50				
	☜	19.65	8.00	8.00	8.00	7.84	7.02	6.04	4.86	4.02	3.40				
35	☞	35.00	4.00	4.00	4.00	4.00	4.00	4.00	4.00	4.00					
	☜	20.34	8.00	8.00	8.00	8.00	7.30	6.29	5.07	4.20					
30	☞	30.00	4.00	4.00	4.00	4.00	4.00	4.00	4.00						
	☜	20.45	8.00	8.00	8.00	8.00	7.35	6.33	5.10						

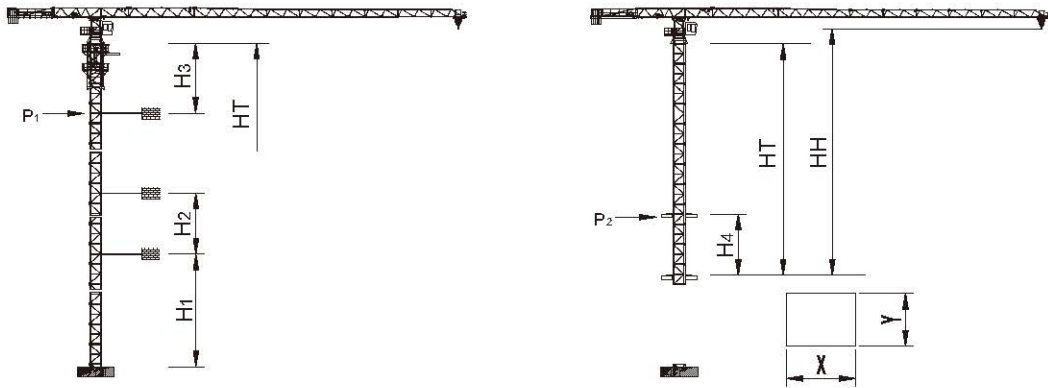
塔身 / Tower



塔身组成
Tower configuration

塔身 Tower	基础节 Base mast		标准节 Mast		HT m	HH m
	规格 Type	数量 Quantity	规格 Type	数量 Quantity		
L46A	L46G	1	L46A	12	43.6	45.5
L68A	L68G1	1	L68A	17	58.6	60.5

爬升 / Climbing

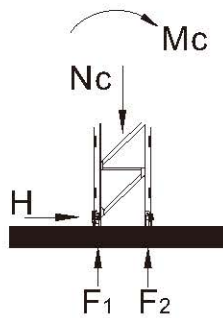


电梯井最小安装尺寸
Min installation dimension of elevator shaft

塔身 Tower	H ₁ (m)	H ₂ (m)	H ₃ (m)	HT _{max} (m)	HH _{max} [※] (m)	P1 _{max} (kN)	塔身 Tower	H ₄ (m)	HT _{max} (m)	HH _{max} (m)	P2 _{max} (kN)	X (m)	Y (m)
L46A	33.1	24.0	34.5	163.6	165.5	159	L46A	14.0	37.5	39.4	162	2.2	1.8
L68A	48.1	36.0	46.5	226.6	228.5	220	L68A	18.0	48.0	51.4	241	2.6	2.2

※HH > HH_{max} 请与我们联系 Contact with us, please.

基础 / Foundation



塔身 Tower	高度 (m) HH (m)	幅度 Radius(m)	基础载荷 Foundation loading			地脚反力 Corner forces	
			Mc (kN.m)	Nc (kN)	H (kN)	F ₁ (kN)	F ₂ (kN)
L46A	45.5	60	2077	531	90	-785	1051
L68A	60.5	60	3952	641	115	-1237	1558








非工作状态 Out of service

回转力矩 /Slewing Moment

Ms = 221 kNm (for jib lengths 60m)

(工作状态 In service)

机构性能 /Mechanisms Specification

机构 Mechanisms							电机 Motor
		t	m/min	t	m/min		
起升 Hoisting		4.0	40.0	8.0	20.0	500m > 500m*	30kW
		2.5	60.0	5.0	30.0		
		1.8	80.0	3.6	40.0		
变幅 Trolleying		58 m/min					4 kW
回转 Slewing		0.64 r/min					2 × 4kW
行走 Traveling		12.5–25 m/min					2 × 2.6/5.2 kW

电源 Power	总功率 Necessary Electric Power
380V(±5%) 50Hz	60 kVA

* 请与我们联系 Contact with us, please.

数据可能有所调整，以产品说明书为准。

Relative parameter might be adjusted. Final parameter is subject to its instruction manual.